

FB-F0-25542-000
SHT 1.1

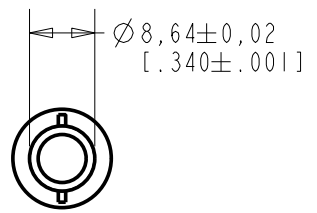
BRASS HOUSING
BLACK CHROME FINISH

5,9±0,1
[.232±.004]

BLACK POLYURETHANE SHRINK COVER
ON FLEXI-SET BOOM

STAINLESS STEEL MESH

NYLON INSERT NUT
AND WASHERS



3,78±0,05
[.149±.002]

19,88±0,50
[.783±.020]

6M x 1mm

WIRE
28 AWG TEFLON COATED
SPEC: BS 2G 210
(2mm STRIPED & TINNED ENDS)

10,49±0,20
[.413±.008]

193±19
[7.61±.75]

150±15
[5.9±.6]

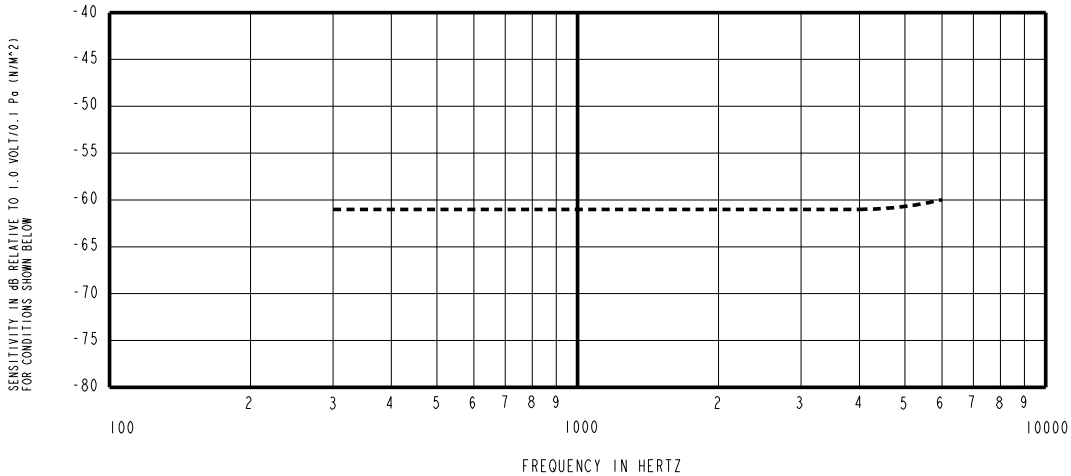
WIRE COLOR			WEIGHT GRAMS
+ve	-ve	SCREEN	
RED	BLACK	GREEN	29.1

DIMENSIONS IN MILLIMETERS [INCHES]

Revision	C.O. #	Implementation Date	RELEASE LEVEL	REVISION
			Active	D
D	C10107748	8-12-08		

SCALE: 1:1	DR. BY: DATE
DO NOT SCALE DRAWING	MMM 6-1-06
TITLE: BOOM MICROPHONE FB-F0-25542-000	CK. BY: DATE
OUTLINE DRAWING	GJP 6-7-06
SHT 1.1	APP. BY: DATE
	GJP 6-7-06

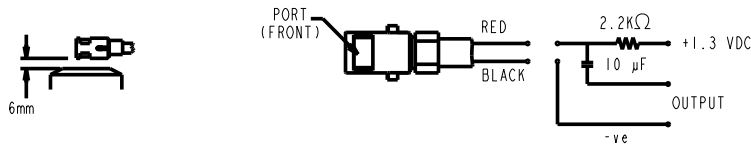
KNOWLES ELECTRONICS
ITASCA, ILLINOIS U.S.A.



NOTES:

- MICROPHONE TO BE FUNCTIONAL WITH 10 VDC SUPPLY.
- SENSITIVITY VALUES INDICATED ON THIS SPECIFICATION ARE VALID AT 50% HUMIDITY.
- SENSITIVITY

FREQUENCY	MIN	NOM	MAX
300	-65.0	-61.0	-57.0
1000	-64.0	-61.0	-58.0
4000	-65.0	-61.0	-57.0
- TEST CONDITIONS:
HEAD OF BOOM EXPOSED TO 94 dB SPL SWEPT SOUND FIELD AT 6mm FROM VOICE APERTURE.
ARTIFICIAL VOICE: B & K 4227 MOUTH SIMULATOR.
- FOR MICROPHONE CAPSULE SPEC. SEE WP-23501-000 SHEET 2.1



LEAD IDENTIFICATION & TEST CIRCUIT

Revision	C.O. #	Implementation Date	RELEASE LEVEL	REVISION
			Active	D
D	C10107748	8-12-08		

KNOWLES ELECTRONICS
ITASCA, ILLINOIS U.S.A.

WHEN TEST LIMITS ARE USED TO ESTABLISH INCOMING INSPECTION ACCEPTANCE/REJECTION CRITERIA, CORRELATION OF TEST EQUIPMENT WITH KNOWLES IS ALSO REQUIRED FOR ELIMINATION OF EQUIPMENT AND TEST METHOD VARIATION

TITLE: **BOOM MICROPHONE FB-F0-25542-000**
PERFORMANCE SPECIFICATION **SHT 2.1**

DR. BY	DATE
MMM	6-1-06
CK. BY	DATE
GJP	6-7-06
APP. BY	DATE
GJP	6-7-06